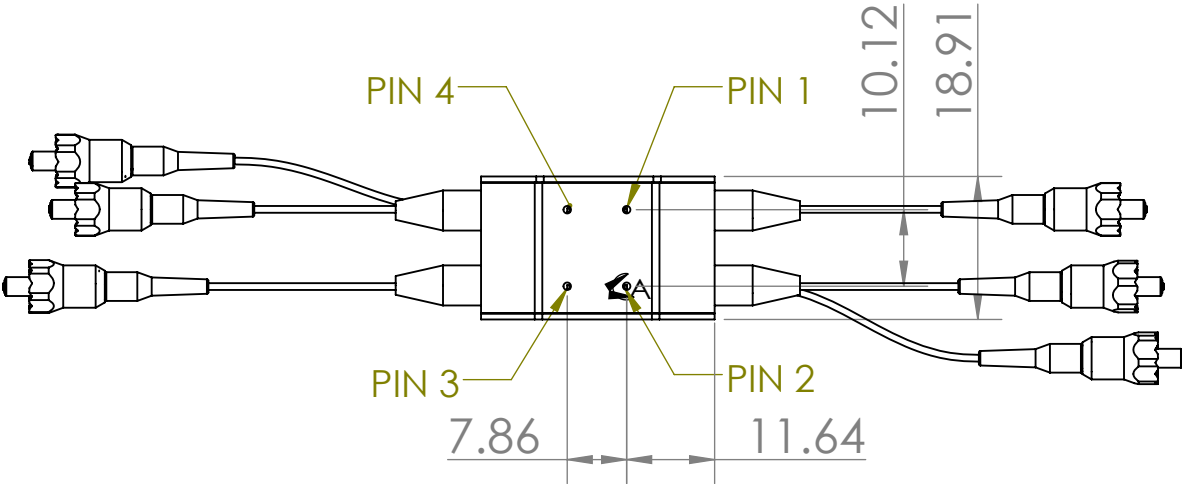


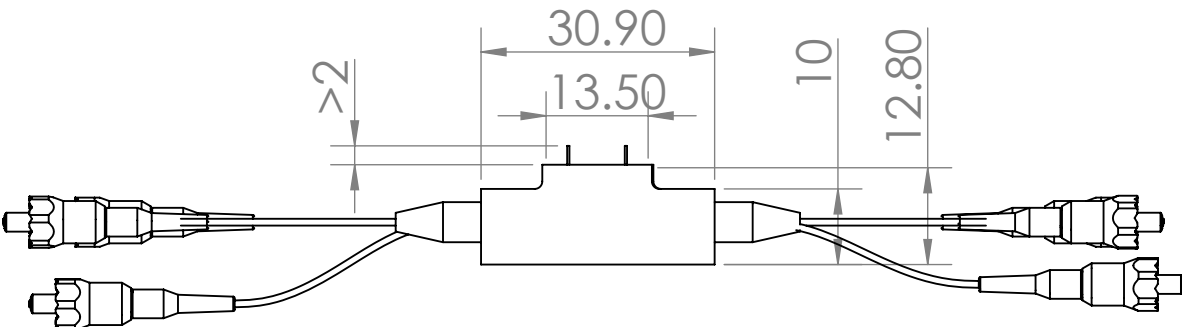
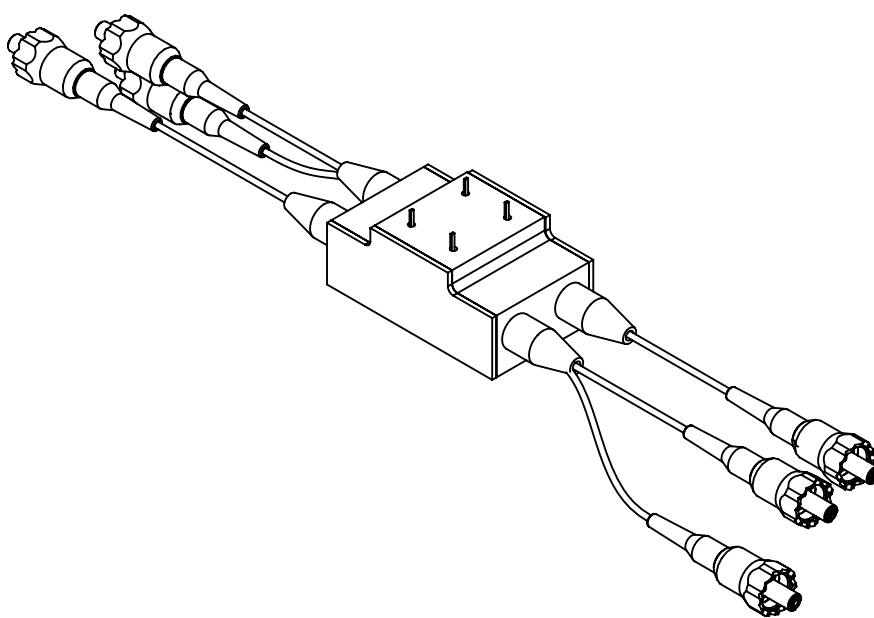
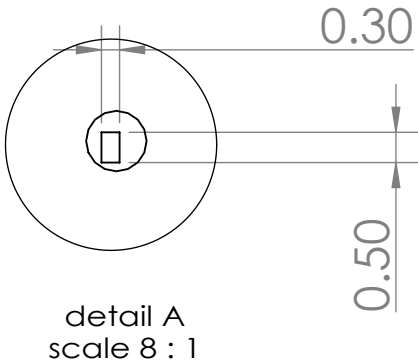
F
E
D
C
B
A

8 7 6 5 4 3 2 1

Pin1 & Pin4 are only used to fix the product and have no electrical function



pin dimension

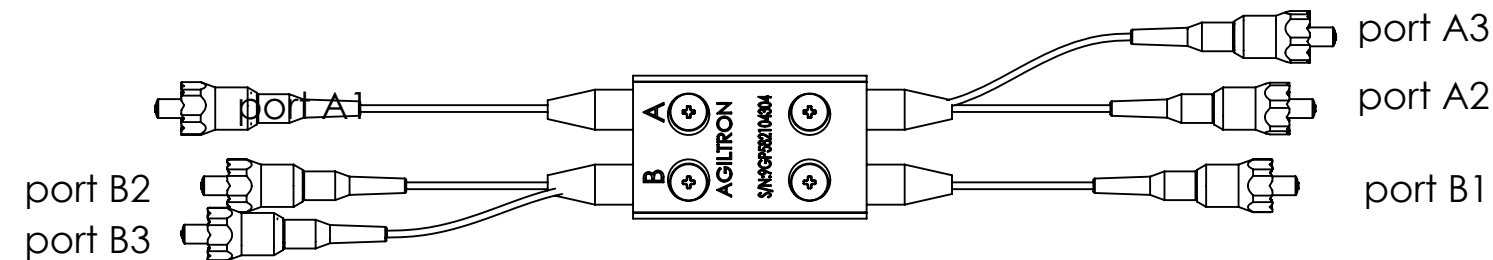


Latching Type

| Optic Path | Electric Drive | |
|------------------|----------------|------|
| | Pin 2 | Pin3 |
| port A1->port A2 | 4.5v | 0v |
| port B1->port B3 | | |
| port A1->port A3 | 0V | 4.5V |
| port B1->port B2 | | |

Non-Latching Type

| Optic Path | Electric Drive | |
|------------------|----------------|----------|
| | Pin 2 | Pin3 |
| port A1->port A2 | No power | No power |
| port B1->port B3 | | |
| port A1->port A3 | 0V | 4.5V |
| port B1->port B2 | | |



UNLESS OTHERWISE SPECIFIED:

1.DO NOT SCALE DRAWING.
2. INTERPRET PER ASME Y14.100M.
3.DIMENSIONS ARE IN METRIC.
4.SURFACE TEXTURE SHALL BE 125
5.REMOVE BURRS AND SHARP EDGES
6.DIMENSIONS APPLY BEFORE PLATING
OR CONVERSION COATING.
7.PARENTHEICAL DATA IS FOR
REFERENCE ONLY

| TOLERANCES: | | | |
|-----------------------|-----------------|---------------|---------------|
| ON ALL HOLE DIAMETERS | | | |
| Under 1.0 | +0.05 -0.01 | 25 THRU 50 | +0.2 -0.1 |
| 1.0 THRU 5.0 | +0.1 -0.025 | >50 | +0.25 -0.1 |
| 5.0 THRU 10.0 | +0.15 -0.025 | | |
| 10.0 THRU 25 | +0.2 -0.025 | | |

| ON DECIMAL DIMENSIONS: | |
|---------------------------|----------|
| .XXX | +/-0.010 |
| .XX | +/-0.03 |
| .X | +/-0.1 |

| ON ANGULAR DIMENSIONS: | |
|---------------------------|----------|
| MACHINED | +/-0°30' |
| LOCATING | +/-0°30' |
| FORMED | +/-2° |
| CHANFERS | +/-5° |

| | | |
|-----------|------|-----------|
| DRAWN | NAME | DATE |
| CHK'D | | |
| APPV'D | | |
| MFG | | |
| Q.A | | |
| MATERIAL: | | DWG NO. |
| WEIGHT: | | SCALE:1:1 |

DO NOT SCALE DRAWING

REVISION

AGILTRON
INC

TITLE: **DUAL FFSW 1X2**

A3

SHEET 1 OF 1